

INPUT VOLTAGE: 235 - 285 VDC
 MAXIMUM CURRENT: 120 AMP
 OPERATING TEMPERATURE: -55C TO +71C
 STORAGE TEMPERATURE: -55 TO +100C
 DIELECTRIC WITHSTANDING (LINE - CASE): 1500 VDC FOR 1 MINUTE
 MATL: 19 GA, .042 THICK CRS, PER ASTM A1008.
 FINISH: HOT SOLDER 60/40 PER MIL-F-14072 M258
 WEIGHT: 6.5 LB.

INSERTION LOSS: SEE CURVES.

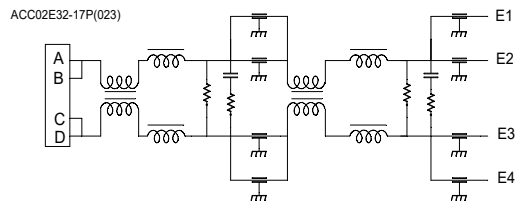
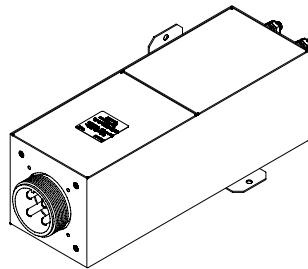
RANDOM VIBRATION, ALL AXES: DO-160, ROBUST, Grms= 5.85
 PROFILE PER FIGURE 8-1, CURVE E

RANDOM VIBRATION, OBJECTIVE, ALL AXES: PER MIL-STD-810G
 CATEGORY 12, Grms 9.87.

SHOCK: IDEAL HALF SINE WAVE, PEAK G'S = 15, DURATION = 11ms

ESD PROTECTION: 250 v MINIMUM, PER ANSI/ESDA/JEDEC JS-002-2014

MTBF: 5,907,659 HOURS @ 71C Gb
 CONDUCTED EMISSIONS: DESIGNED FOR MIL-STD-461E, CE102
 INPUT POWER CHARACTERISTICS: MIL-STD-704E, PARAGRAPH 5.3.2



SCALE	APPROVED BY	DRWN BY	RDW
DATE 7/1/2020		REV DATE	7/8/2020
SPECIFICATION			REVISION
			B
TOLERANCE .XX = .01 .XXX = .005	DRAWING NO.		ZM-2435-120
DIM: INCHES (mm)			