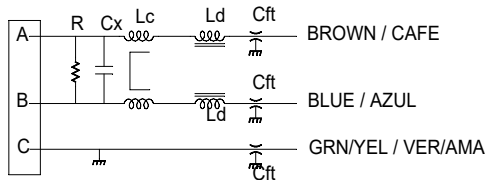


INPUT VOLTAGE: 115/250 VAC
 OPERATING FREQUENCY: 50 / 400 Hz
 MAXIMUM CURRENT 3.0 AMPS
 DIELECTRIC WITHSTANDING (LINE - CASE): 1500VRMS FOR 1 MINUTE
 DIELECTRIC WITHSTANDING (LIN - NEUT): 1500 VDC FOR 1 MINUTE.
 LEAKAGE CURRENT @ 250VAC, 60Hz: 0.4ma MAX
 OPERATING TEMPERATURE: -20C to 50C
 STORAGE TEMPERATURE: -40C to 100C.
 WEIGHT: 0.45 LB .



Cx = 0.33 uF 2414-5
 Cft = 0.01 uF 3958 (3x)
 Lc = 10.8 mH 1071-325
 Ld = 95 uH 1039-55 (2x)
 R = 470K OHM 2007-11

JMK Inc.			
SCALE	APPROVED BY	DRWN BY	RDW
DATE 1/7/2022		REV DATE	1/25/2022
SPECIFICATION			REVISION B
TOLERANCE	XX = .02 .XXX = .005	DRAWING NO.	ZF-2469-3
DIM: INCHES (mm)			