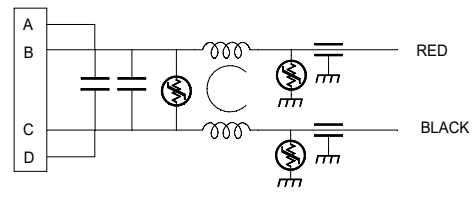


D38999/20TB2PN



MAX OPERATING VOLTAGE: 40 VDC
 MAXIMUM OPERATING CURRENT: 13A
 MAX OPERATING TEMPERATURE: -40 TO 55C
 STORAGE TEMPERATURE: -55 TO 100C
 VARISTOR VOLTAGE (LINE - LINE): 50 - 63V
 VARISTOR VOLTAGE (LINE - GRD): 324 - 595V
 MAX VOLTAGE (LINE - GRD): 400 V
 MAX ENRGY SUPPRESSION (LINE - LINE): 4.0 JOULE
 MAX ENERGY SUPPRESSION (LINE - GRD): 60 JOULE

SCALE	APPROVED BY	DRWN BY	RDW
DATE 7/30/2020		REV DATE	8/11/20
SPECIFICATION			REVISION
			B
TOLERANCE .XX = .01 .XXX = .005		DRAWING NO.	
DIM: INCHES (mm)		ZF-2418-13B	