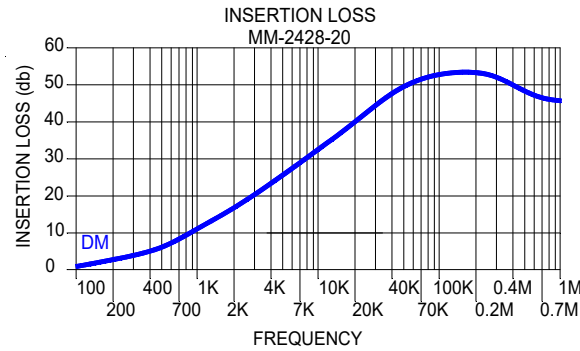
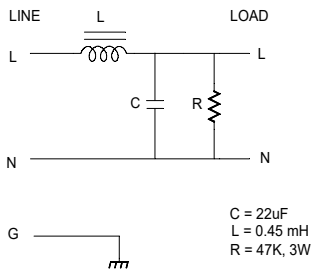
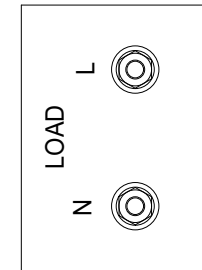


RECOMMENDED CONNECTION TORQUE = 40 - 45 IN. LBS.

SPLIT LOCK WASHER AND HEX NUT ARE SUPPLIED WITH EACH FILTER



INPUT VOLTAGE: 115 / 220 Vac
 OPERATING FREQUENCY: 50 / 60 Hz
 MAXIMUM CURRENT: 20A /LINE
 MAXIMUM PEAK VOLTAGE LINE - LINE: 600V
 OPERATING TEMPERATURE: -40 TO 75C
 STORAGE TEMPERATURE: -40 TO 100C
 DISCHARGE TIME FROM 360V PEAK TO TO 34 VOLTS: 2.5 SECONDS

JMK, Inc.			
SCALE	APPROVED BY	DRWN BY	RDW
DATE 1/7/2020		REV DATE	6/2/2021
SPECIFICATION			REVISION D
TOLERANCE	.XX = .02 .XXX = .005	DRAWING NO.	MM-2428-20