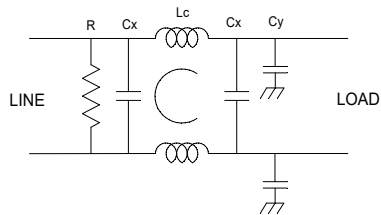
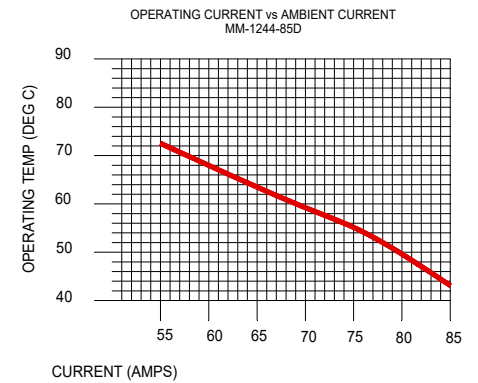
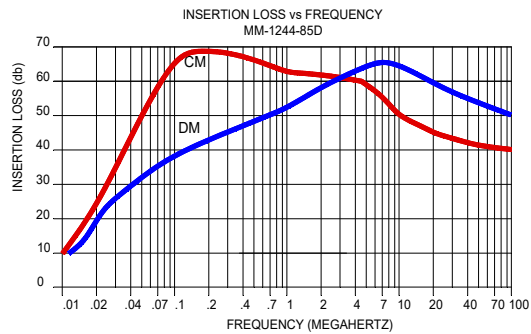


Max. Operating Voltage = \_\_\_\_\_ 250 Vdc  
 Max. Operating Current = \_\_\_\_\_ 85A  
 Temp. Range (Storage) = \_\_\_\_\_ -40°—100°C  
 Temp. Range (Operating) = \_\_\_\_\_ -40°—see graph  
 Diel. Withstanding Voltage (Line-Case) = \_\_\_\_\_ 1500 Vdc  
 Diel. Withstanding Voltage (Line-Line) = \_\_\_\_\_ 600 Vdc  
 Discharge Voltage after 1.5 sec = \_\_\_\_\_ 35 V max.



R = 470 KOHM  
 Cx = 4.4 uF  
 Lc = 0.09 mH  
 Cy = 0.33 uF



<b>JMK INC</b>		
SCALE NONE	APPROVED BY	DRWN BY RDW
DATE 8/10/2011	REV DATE	3/23/16
<b>SPECIFICATION</b>		REVISION <b>A</b>
TOLERANCE .XX = .02 .XXX = .005	DRAWING NO. <b>MM-1244-85D</b>	