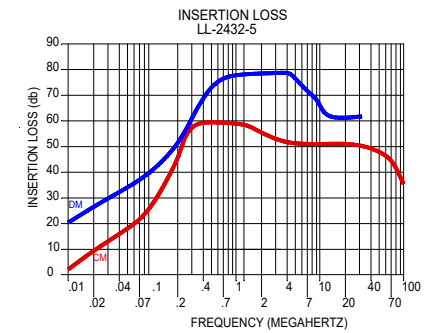
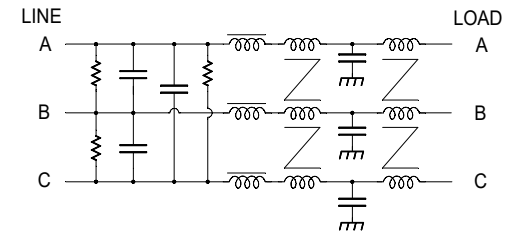


OPERATING VOLTAGE (AC): 208V, 3PH, 400Hz  
 OPERATING VOLTAGE (AC): 250V, 3PH, 50/60Hz  
 OPERATING FREQUENCY: 50 - 400 Hz  
 OPERATING CURRENT: 5A RMS  
 OPERATING VOLTAGE (DC): 270Vdc  
 MAX. OPERATING CURRENT(AC) : 5A RMS  
 MAX. OPERATING CURRENT (DC): 5A  
 OPERATING TEMPERATURE: (-40C) TO (60C)  
 STORAGE TEMPERATURE: (-55C) TO (100C)  
 DIELECTRIC WITHSTANDING (LINE - CASE): 1500 Vrms FOR 1.0 MIN.  
 DIELECTRIC WITHSTANDING (LINE - LINE): 1500 Vdc FOR 1.0 MIN  
 LEAKAGE CURENT: 0.6ma @ 120V, 60Hz PER LINE.  
 DISCHARGE VOLTAGE: 35 VOLTS AFTER 1.1 SECONDS



<b>JMK INC</b>		
SCALE: NONE	APPROVED BY:	DRWN BY: RDW
DATE: 2/17/2020		REV DATE: 3/17/20
<b>SPECIFICATION</b>		<b>A</b>
TOLERANCE: XX = .02 XXX = .005	DRAWING NO. LL-2432-5	