

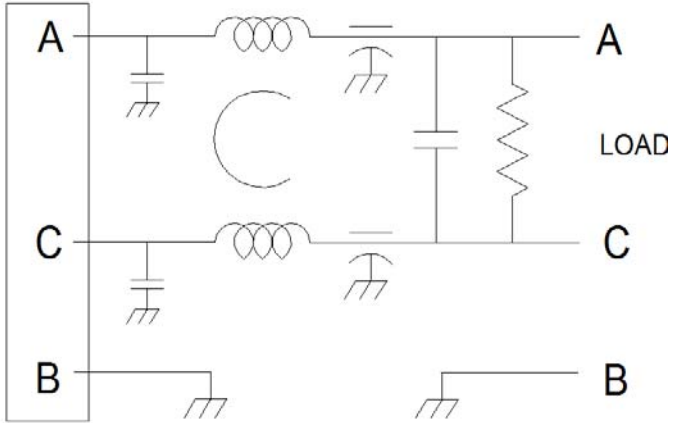


ZL-1403-15

The ZL-1403-15 filter is configured to work with systems that need to meet MIL-STD-461C.

The filter has an integral MIL connector for a secure, "through hole" connection.

If more stringent environmental characteristics are needed, this filter can be adapted with minimal design changes.



Operating Voltage = _____ 110/220 Vac
 Operating Current Max = _____ 15.0 Amp
 Operating Frequency = _____ 50 - 60 Hz
 Operating Temperature = _____ -55 - 85°C

Diel. Withstand (Line to Case) = _____ 900Vdc for 1 Min
 Diel. Withstand (Line to Line) = _____ 900Vdc for 1 Min

Leakage Current = _____ 62 mA @ 250 VAC, 60Hz
 Discharge after 3.0 sec. = _____ 34 V

Calculated MTBF = _____ 678,879 hrs GB @ 30°C

