

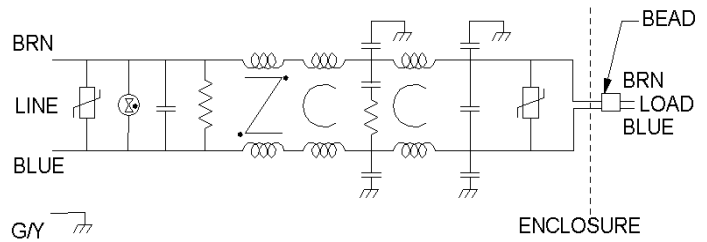
FF-2137B-13

This filter has been designed to operate with the Granite Power (MPFC1M21) harmonic attenuator module.

The combination is designed to meet the conducted emissions requirements of Mil-Std-461F.

The filter will also function very well with most other fixed frequency switching power supplies.

Order P/N: FF-2137B-13

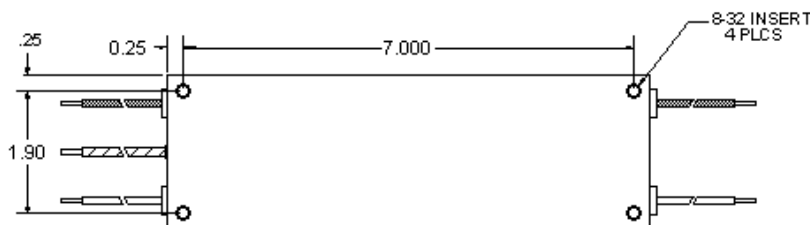
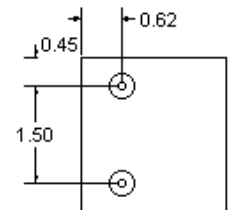
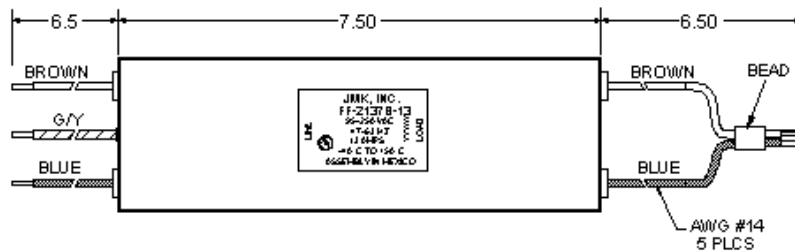
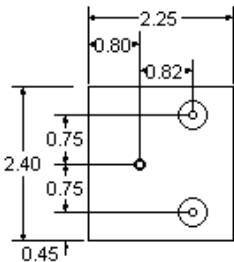
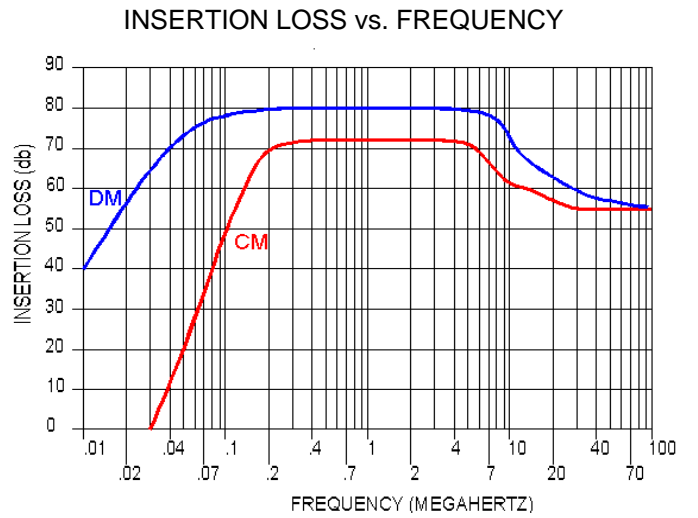


Operating Voltage = _____ DC—250 Vac
 Operating Current (Max)= _____ 13A

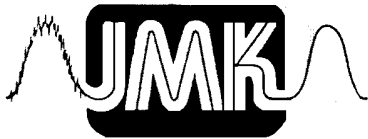
Frequency = _____ 50/60 HZ @ 250 Vac
 = _____ 400 Hz @ 120 Vac

Temp. Range (Storage) = _____ -25°—100°C
 Temp. Range (Operating) (-13)@ 13.0 A = _ -25°—50°C
 (See temp graph pg.2)

Diel. Withstanding Voltage (Ph—Case) = _____ 1500 Vac
 Diel. Withstanding Voltage (Ph—Ph) = _____ 1500 Vdc
 Leakage Current @ 250 Vac, 60 HZ = _____ 2.5 MA max.
 Discharge Voltage after 3 sec = _____ 20 V max.
 Weight = _____ 2.75 LB / 1.25 Kg
 Filters per standard carton = _____ 4 max.



USA JMK Inc 15 Caldwell Dr. Amherst, NH 03031 PH: 603 886-4100 FX: 603 886-4115
 email: info@jmkfilters.com
 EUR JMK Inc Glasgow G13 1DN Scotland UK PH: 44-(0) 7785310729 Fax: 44-(0) 141 589 1884



FF-2137B-13

Conducted Emission Test Results:

Mil-Std-461F: CE102
 Input Voltage: 120 V
 Frequency: 60 Hz
 Input Current: 13.5 amp
 Output Power: 1400 Watt
 Temperature: 23°C

Comments:

The "worst case" emissions occurred full load. The results for the Primary line are shown below.

The emissions for the neutral line were very similar to the primary line.

