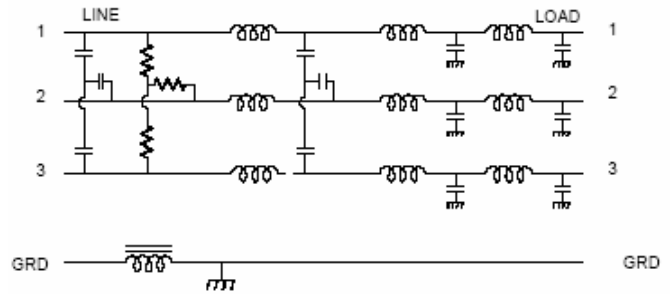




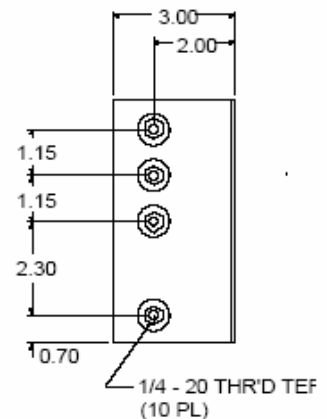
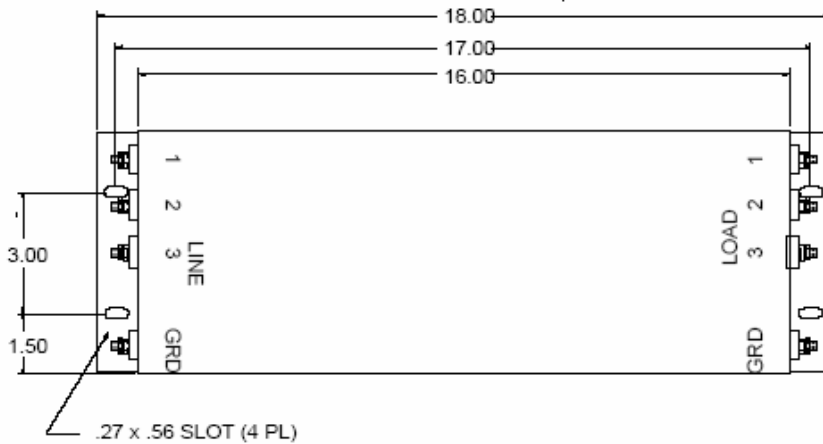
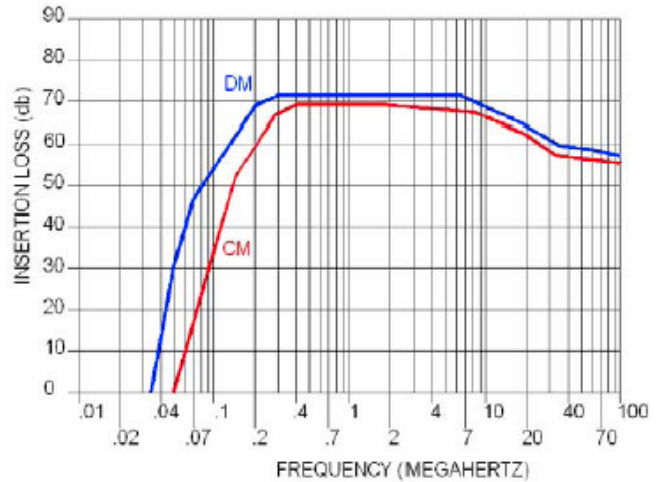
# MM-1315-100

The Mm-1315-100 filter is designed for use with large computer or motor installations where heavy current is drawn continuously. This filter can handle large in-rush current typical of modern power supplies. When data lines or power is shared with other systems the ground coil helps breakup ground loops which can cause system errors and also increase conducted RF



Operating Voltage = 250/480 V~, 50 / 60 Hz  
 Operating Voltage = 125/208 V~, 50 – 400 Hz  
 Operating Current = 100 A / Phase  
 Temperature Range = -20 TO 50 Deg. C  
 Diel. Withstand (L-CASE) =1500 V~For 1 MIN.  
 Diel. Withstand (L-L) = 2200 Vdc For 1 Min.  
 Leakage Current = 18 ma (max) @ 250 V~, 60 Hz  
 Resid.Volt after 3.0 second = 20 V Max.  
 Max. Cap. each line to case = 0.10 uF

Order P/N: MM-1315-100



USA JMK Inc 15 Caldwell Dr. Amherst, NH 03031 PH: 603 886-4100 FX: 603 886-4115

email: info@jmkfilters.com

EUR JMK Ltd Glasgow G13 1DN Scotland UK PH: 44-(0) 7785310729 FX: 44-(0) 141 589 1884