

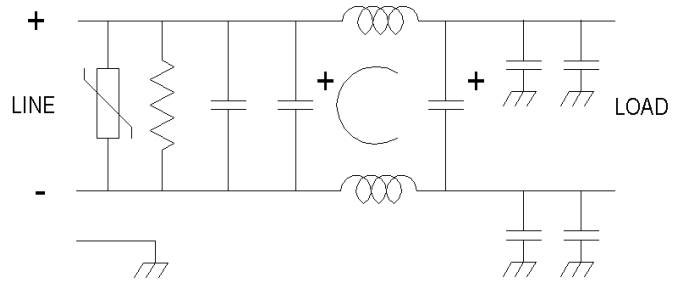


LL-1111-30

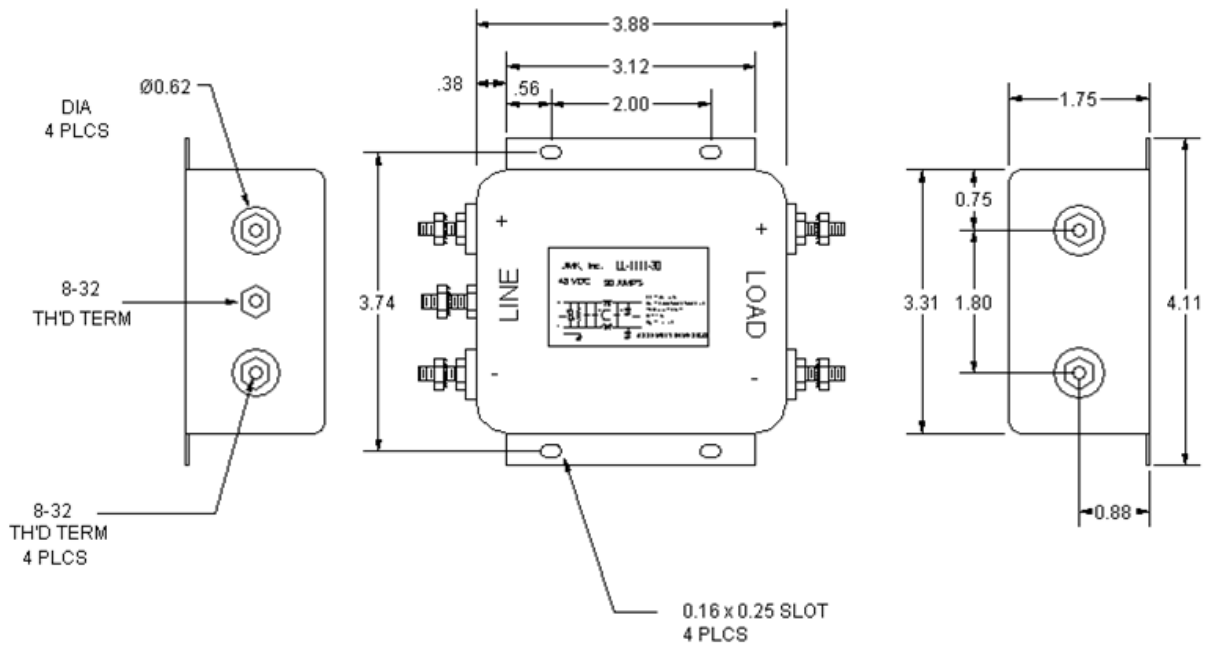
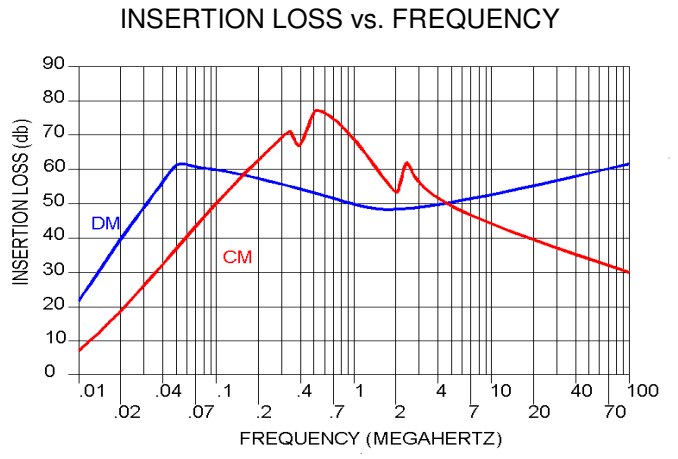
This filter series is intended to provide transient and surge suppression for DC power systems.

In addition to transient and surge suppression the filter also provides very good common mode and differential mode insertion loss.

For systems operating in extremely noisy areas, or for systems with extremely high emissions this filter will work very well.



Operating Voltage = _____ 48 VDC
 Operating Current (max) = _____ 30 Amps
 Temperature Range (storage) = _____ -20 to 85°C



USA JMK Inc 15 Caldwell Dr. Amherst, NH 03031 PH: 603 886-4100 FX: 603 886-4115
 email: info@jmkfilters.com
 EUR JMK Inc Glasgow G13 1DN Scotland UK PH: 44-(0) 7785310729 Fax: 44-(0) 141 589 1884