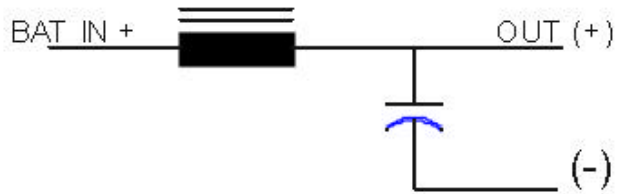




# KK-1443-35

The LL-1443-35 filter has been developed for use with automotive electrical systems . Automotive electrical systems are very noisy and electronic systems installed in vehicles need to be protected against the electrical interference and transients generated by the power system. This filter is designed to provide this.



**Operating voltage (max) = 50 Vdc**  
**Operating Current (max) = 35 Amperes**  
**Temperature range (storage) = -40 to 105 C**  
**Temperature range (operating) = -40 TO 65 C**  
**Design Specifications:**  
**Humidity: Mil-Std-810, 507.3, cycle 5**  
**Temperature: Mil-Std-810, 507.3-1**  
**Vibration: Mil-Std-810,**  
**Shock: Mil-Std-810, Proc. (5), Crash hazard**

