



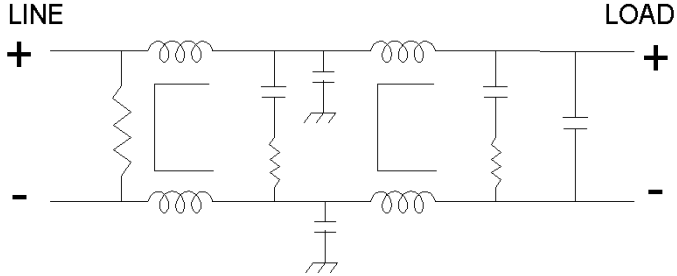
KK-1328-32

This filter series is intended to provide common mode and differential insertion loss for DC power systems.

This filter can be used for either commercial applications or for applications involving MIL-STD -461D, E, or F.

If the older 461C spec is required, the circuit can be rearranged to accommodate the C version.

If severe shock or vibration are required, please contact our engineering department to discuss any necessary modifications.



Operating Voltage = _____ 18 - 36 VDC
 Operating Current (max) = _____ 32 Amps

Temperature range (storage) = _____ -55 to 85 °C
 Temperature range (operating)

- 32 A = -40 to 55 °C
- 30 A = " 60 °C
- 28 A = " 64 °C
- 24 A = " 73 °C
- 22 A = " 78 °C

Calculated MTBF = _____ 7,386,888 Hrs GB @ 30 °C

