



CC-1448-12

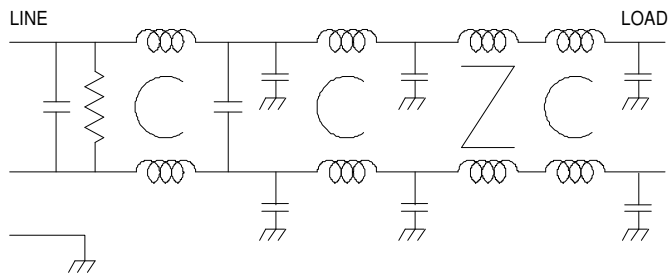
The CC-1448-12 is a single phase filter designed to function in the Mil-Std-461D, E, & F emissions environment.

The filter is also designed to function over a wide temperature range from -65 to +100 C.

The filter is also hermetically sealed to meet moisture and immersion requirements

Weight = 1300 gram / 2.9 lb.

Order P/N: CC-1448-12



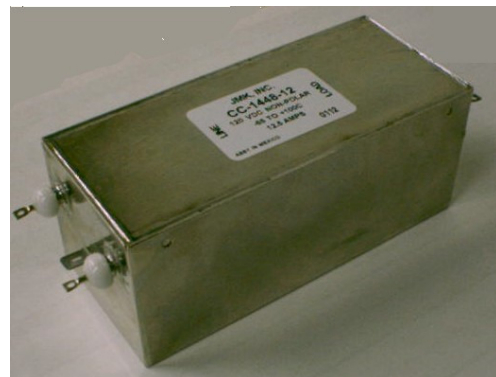
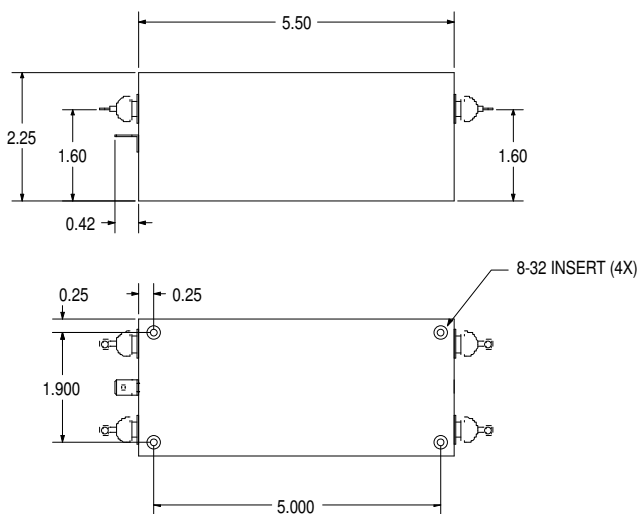
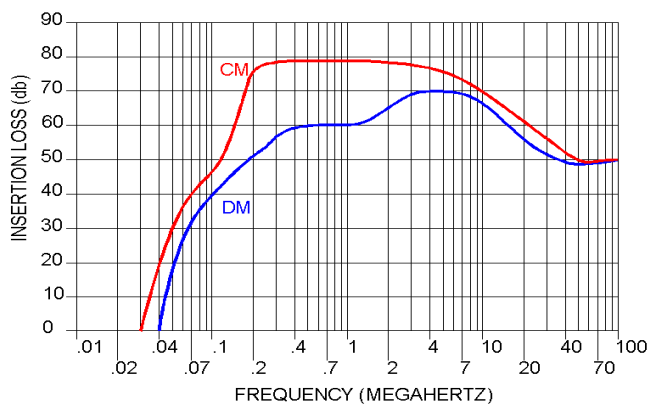
Operating Voltage = _____ 250 Vac or Vdc @75°C
Operating Voltage = _____ 125 Vac or Vdc @100°C
Operating Current (Max) = _____ 12 AMP A/C or D/C
Operating Frequency = _____ DC—60 HZ

Temperature Range (Storage) = _____ -40—125°C
Temperature Range (Operating) = _____ -65—100°C

Diel. Withstand Voltage (Ph—Case) = _____ 1500 Vac
Diel. Withstand Voltage (Ph—Ph) = _____ 1500 Vdc
Leakage Current @ 250 V~, 60 HZ = _____ 2.5 MA Max
Discharge Voltage after 60 sec = _____ 34 V Max

Calculated MTBF = _____ 193,954 Hrs @ 30°C GB

INSERTION LOSS vs. FREQUENCY



USA JMK Inc 15 Caldwell Dr. Amherst, NH 03031 PH: 603 886-4100 FX: 603 886-4115
email: info@jmkfilters.com
EUR JMK Inc Glasgow G13 1DN Scotland UK PH: 44-(0) 7785310729 Fax: 44-(0) 141 589 1884