

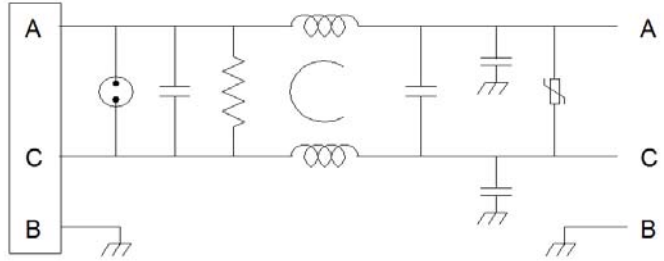
ZL-1576-15

The ZL-1576-15 filter is configured to work with systems that need to meet MIL-STD-461D,E or F. The filter has an integral MIL connector for a secure, "through-hole" connection.

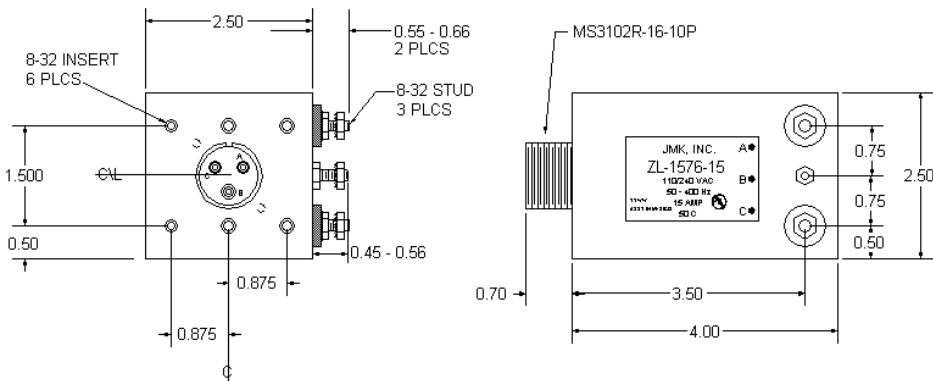
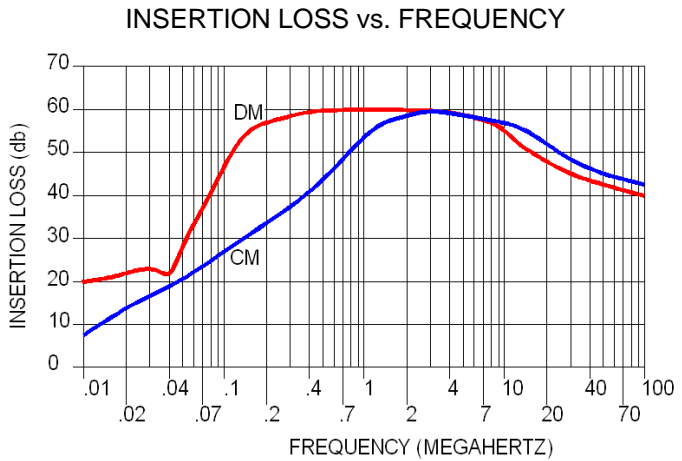
If more stringent environmental characteristics are needed, this filter can be adapted with minimal design changes.

This filter is available with different connectors:

- MIL3102R-16-10P = ZL-1576-15
- MS3452W20-4P = ZL-1576-10B
- DL3102A18-10S = ZL-1576-10C
- D38999/20WE6PN = ZL-1576-15D
- MS3470L14-4P = ZL-1576-15E



Operating Voltage = _____ 115/240 Vac
 Operating Current Max = _____ 15.0 Amp
 Operating Frequency = _____ 50 - 400 Hz
 Temperature Operating = _____ -20 TO 50°C
 Die Withstand (L-Case) = _____ 1500V~ for 1 Min
 Die Withstand (L-L) = _____ 1500Vdc for 1 Min
 Leakage Current = _____ 0.5 ma @ 250 VAC, 60Hz
 Varistor Voltage Activation = _____ 382 - 466 volts
 Gas Tube Activation = _____ 425 Volt min
 Discharge after 1.0 sec.= _____ 34 V
 MTBF = _____ 844775 hrs at 50°C GB
 = _____ 211193 hrs at 40°C NS
 = _____ 93864 hrs at 45°C NU



USA JMK Inc 15 Caldwell Dr. Amherst, NH 03031 PH: 603 886-4100 FX: 603 886-4115
 email: info@jmkfilters.com
 EUR JMK Inc Glasgow G13 1DN Scotland UK PH: 44-(0) 7785310729 Fax: 44-(0) 141 589 1884