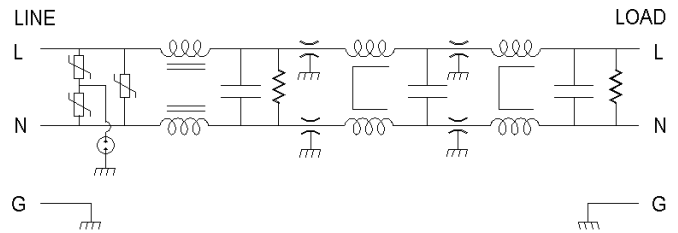
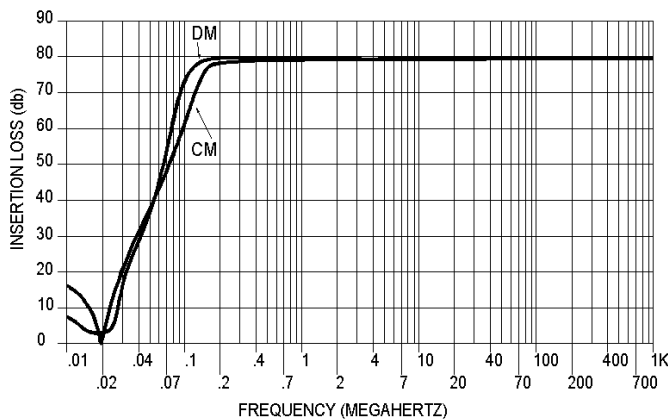


### Performance Characteristics

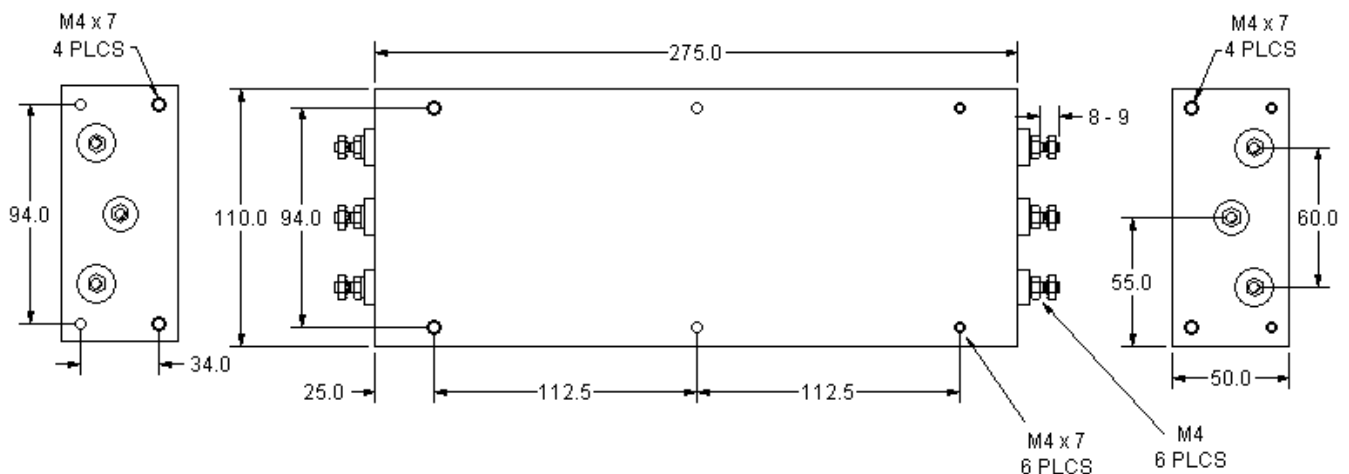
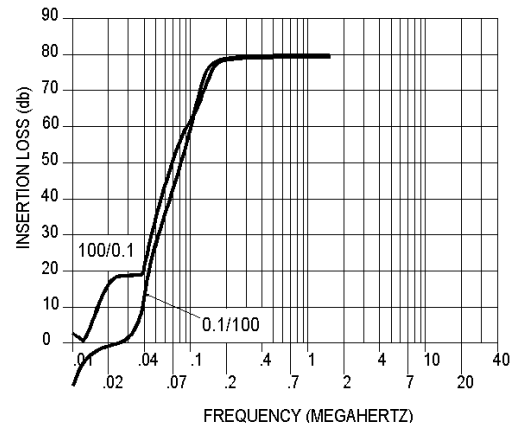
Operating voltage: 250 Vac  
 Operating Frequency Range: DC—400 Hz  
 Max. operating current: 20.0 ampere  
 Operating temperature: -25—85°C  
 Dielectric Withstand. Line/case: 600 Vac. (1.0 Sec)  
 Dielectric Withstand. Line/Neut: 600 Vdc. (1.0 Sec)  
 Capacitance, (Each line—case): 0.015  $\mu$ F Typ.  
 Leakage current 125V, 60 Hz: 0.85 ma max  
                                   125V, 400 Hz: 5.70 ma max  
                                   250 V, 50 Hz: 1.45 ma max  
 Designed to meet UL 1283, CSA 22.2, IEC 60939  
 Weight: 3.25 Kg / 7.16 lb Max



INSERTION LOSS  
50 / 50



DIF MODE INSERTION LOSS  
0.1/100 AND 100 / 0.1



USA JMK Inc 15 Caldwell Dr. Amherst, NH 03031 PH: 603 886-4100 FX: 603 886-4115  
 email: info@jmkfilters.com

EUR JMK Inc (UK) Glasgow, Scotland UK PH: 44-(0) 7785310729 FX: 44-(0) 141 589-1884