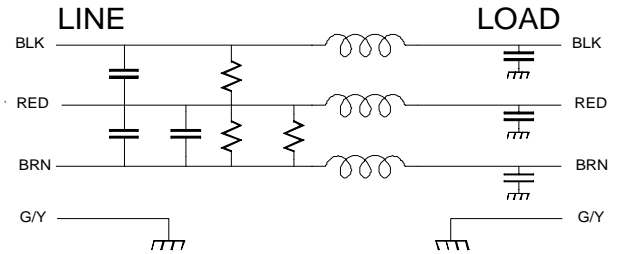


**Operating Voltage = 250/480 V~, 50 / 60 Hz**  
**Operating Voltage = 125/208 V~, 50 – 400 Hz**  
**Operating Current = 10 A / Phase**  
**Temperature Range = -20 TO 50 Deg. C**  
**Diel. Withstand (L-CASE) = 1500 V~ FOR 1 MIN.**  
**Diel. Withstand (L-L) = 1500 Vdc For 1 Min.**  
**Leakage Current = 3.4 ma @ 250 V~, 60 Hz**  
**Discharge Volt after 1.0 second = 34 V Max.**  
**Maximum Capacitance each line to case = 0.016  $\mu$ F**

**Order P/N: FF-1585-10**



**The FF-1585-10 is a delta configuration, 3-phase filter designed for use with large computers, power distribution units, motor installations, etc.**  
**The compact size and leads make the filter package easy to install where size is at a premium.**

