



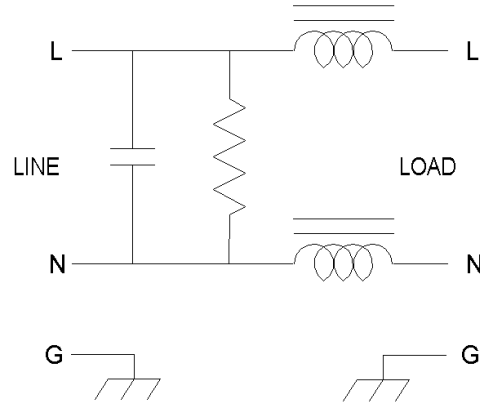
# EE-2051-5

The EE-2051-5 series is designed to provide enhanced insertion loss for systems that may need a little extra suppression of conducted emissions in the Mil-Std-461 environment.

This filter is also available with a mounting tab in order to secure it to a standard wall outlet. It also features a thermal breaker so fuses do not have to be maintained in the inventory.

The components are potted to provide solid insulation between electrical parts and to increase the shock and vibration capability on the finished unit.

Order P/N: EE-2051-5  
EE-2051-5T (Mounting Tab)



Operating Voltage = \_\_\_\_\_ 125 Vac  
Operating Current = \_\_\_\_\_ 5 Amps  
Operating Frequency = \_\_\_\_\_ 50/60 Hz  
Operating Temperature = \_\_\_\_\_ -20 to 60°C

Diel. Withstanding (line-case) = \_\_\_\_\_ 1500V~ for 1 Min  
Diel. Withstanding (line-line) = \_\_\_\_\_ 1500Vdc for 1 Min

Leakage Current = \_\_\_\_\_ 30μA Max. @ 125 V / 60Hz  
Max Residual Voltage after 1 sec = \_\_\_\_\_ 32 V  
Enclosure Material = \_\_\_\_\_ Flame Retardant ABS  
Flame Rating = \_\_\_\_\_ UL94V-0

Calculated MTBF = \_\_\_\_\_ 3,912,363 Hrs @ 30°C GB

