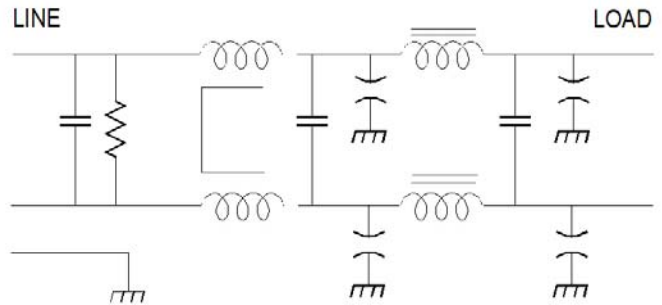
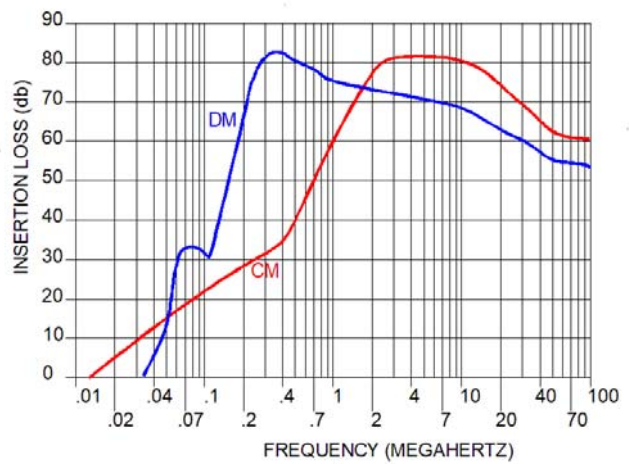


The CC-310-3 has a wide operating temperature range and is designed to withstand severe shock and vibration environments. The filter will function well with switching power supplies where a considerable amount of common mode and differential mode electrical noise is present. It insertion loss has been enhanced in both common mode and differential mode. This filter will perform well with power supplies that are subjected to Mil-Std-461D, E and F test conditions.



Operating Voltage = 115/250 V~
 Operating Current = 3 Amps
 Operating Frequency = 50 / 60 Hz
 Temperature Range = -40 TO 65 Deg. C
 Diel. Withstand (L-CASE) = 1500 V~ FOR 1 MIN.
 Diel. Withstand (L-L) = 1500 Vdc For 1 Min.
 Leakage Current = 1.0 ma @ 250 V~, 60 Hz
 Discharge Volt after 1.0 second = 34 V Max.



Order P/N: CC-0310-3

