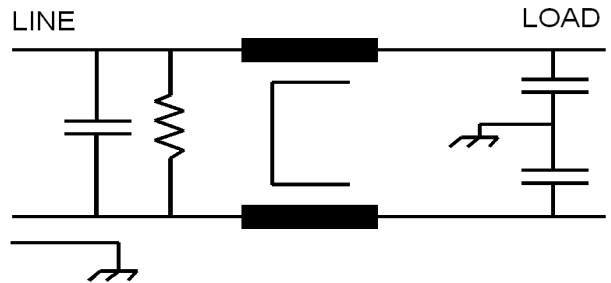




0989 SERIES

The 0989 filters are excellent for suppressing noise from switching power supplies and other devices where a considerable amount of common mode and differential mode electrical noise is present.

This series is available with either 6.3mm terminals or with an IEC inlet connector
 MTBF = 422,365 hours GB



Operating Voltage = 115/250VAC
Operating Current = 3,6,8 & 10 amperes
Operating Frequency = 50/60 Hz
Operating Temperature = -10 to 50 deg. C
Dielectric Withstanding (Line-Ground) = 1500 VDC for 1 minute
Dielectric Withstanding (Line to Line) = 1500 VDC for 1 minutes
Leakage Current = 1.0 mA @ 250 VAC, 50Hz
Residual Voltage (Max after 5 sec.) = 10 Volts
Agency Approvals -8 UL, CSA, VDE
-3,-6,-10 Pending

