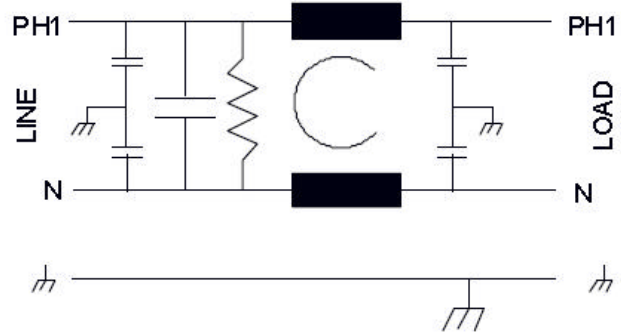


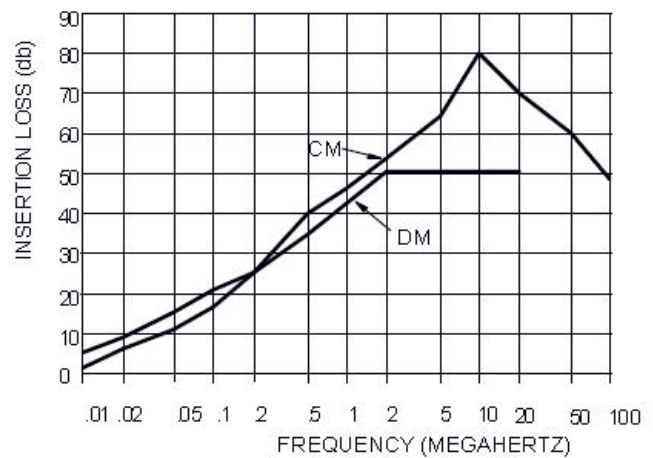


0283 "E" SERIES

The 283 filter is a compact, single phase, high current device with very good common mode and differential mode insertion loss. It is very useful in power control systems. This "E" configuration is identical to our 283 series except that the ground coil has been eliminated for use in "Stand Alone" situations. The enclosure has also been modified to match a standard filter enclosure configuration.



Operating voltage = 115/250 Vac
 Operating current = 20, 30 Amp
 MTBF on the 20amp filter = 363,174 hours GB
 Operating frequency = 50/60Hz
 Operating temperature = -20 to 50 o C
 Diel. withstanding (line - case) = 1500 Vac
 Diel. withstanding (line - line) = 1500 Vdc
 Leakage current = 1.5 ma at 250 Vac, 60 Hz
 Max residual voltage after 1 sec. = 30 Volts
 Agency approvals = UL, CSA, VDE



Ordering Information
 20 AMPS LL-0283-20E
 30 AMPS LL-0283-30E

