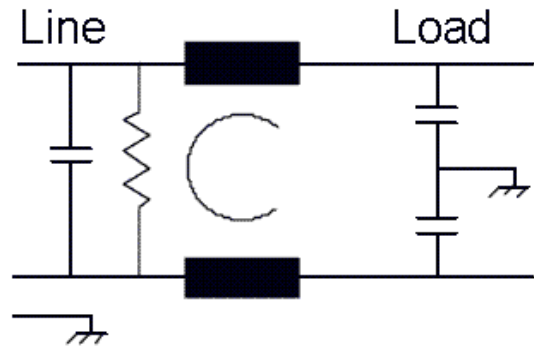




# 0233G SERIES

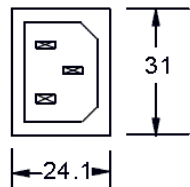
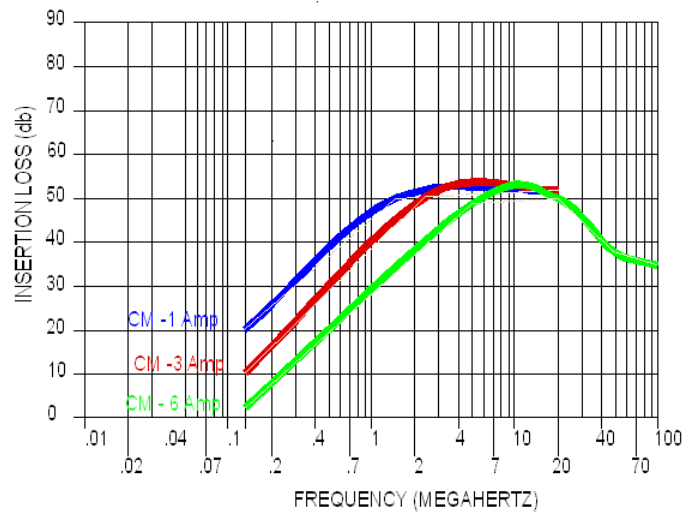
The "SNAP IT IN" 233G Series is designed to provide common mode and differential mode filtering for power supply inputs of computer peripheral and other electronic hardware.

**MTBF= 482,486 hours GB**

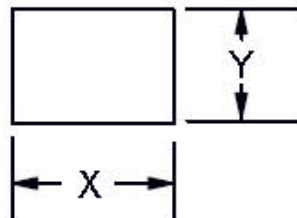


**Operating voltage = 115/250 Vac**  
**Operating current = 1, 3, 6, 10, 15 Amp**  
**Operating frequency = 50/60Hz**  
**Operating temperature = -20 to 50oC**  
**Diel. withstanding (line - case) = 1500 Vac**  
**Diel. withstanding (line - line) = 1500 Vdc**  
**Leakage current = 0.5 ma (Max) at 250 Vac, 60 Hz**  
**Agency approvals**  
**UL = E60380, section 3**  
**CSA = LR50822, section 120**

**Ordering Information**  
**1 AMP = EA-0233-1G**  
**3 AMP = EA-0233-3G**  
**6 AMP = EA-0233-6G**  
**10 AMP = EA-0233-10G**  
**15 AMP = EA-0233-15G**

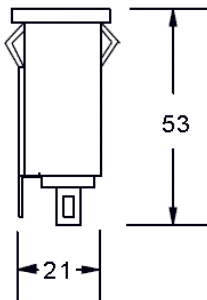
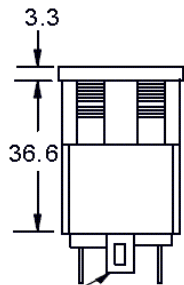


## PANEL MOUNTING HOLE



## MOUNTING HOLE DIMENSIONS

| PANEL THK  | X    | Y    |
|------------|------|------|
| 1 - 1.8    | 29.4 | 20.7 |
| 1.9 - 3.2  | 29.4 | 20.9 |
| TOL = ± .1 |      |      |



6.3 TAB TERM (3 PL)