



220 SERIES

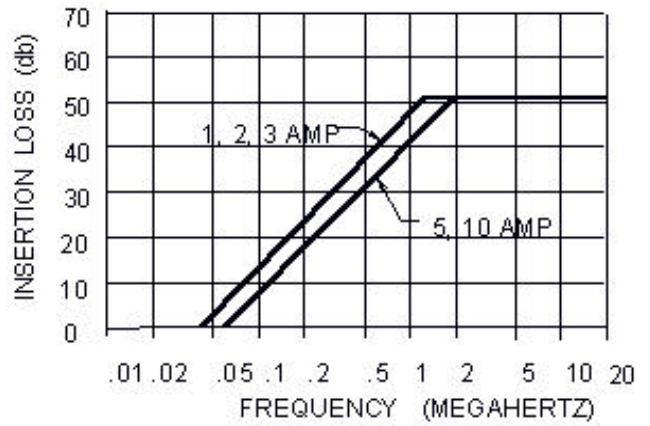
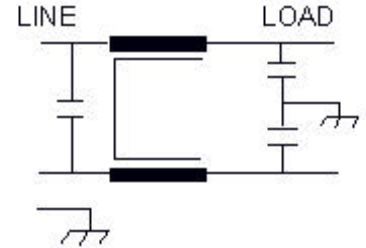
Operating voltage = 115/250 Vac
 Operating current = 1, 2, 3, 10, 20, Amp
 Operating frequency = 50/60 Hz
 Operating temperature = -20° to 50° C
 Diel. Withstanding (line-case) = 1500 Vac
 Diel. Withstanding (line-line) = 1500 Vac
 Leakage current = 0.5 ma at 250 Vac, 60 Hz
 Max residual voltage after 1 sec. = 30 Volts
 Agency approvals = UL, CSA

The 220 series is designed to provide common-mode filtering for computer peripheral and other electronic hardware using linear power supplies.

Ordering Information

AA-0220-1

Use AA for (0.25) tab terms
 Use FF for leads
 Use -1 for current rating



DIMENSIONS (INCHES)

	A	B	C	D	E
1,2,3,5 AMP	1.75	2.13	2.50	.75	1.25
10 AMP	1.75	2.13	2.50	1.13	1.25
20 AMP	2.00	2.38	2.78	1.13	2.00

