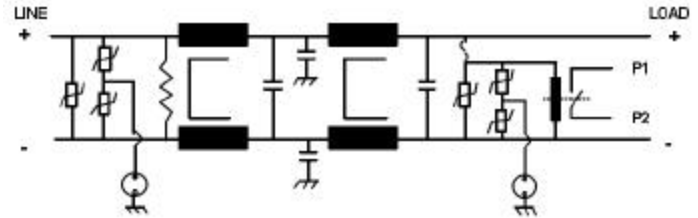




MM-1222-100

This filter series is intended to provide transient and surge suppression for DC power systems. In addition to transient and surge suppression the filter also provides very good common mode and differential mode insertion loss. If the transient suppression network is destroyed the filter has a switch which will provide a contact closure in order to alert a surveillance system



Operating voltage = 18 - 36 VDC
Operating current (max) = 100 amperes
Temperature range (storage) = -55 to 85 c
Temperature range (operating) = -40 to 55 c
Transient Clamping voltage = 42 - 52 V
Surge clamping voltage = 75 - 110 V
Discharge current (8/20 us) = 20,000 amp
Approvals: CSA class I, div 2 for hazardous

Order p/n: MM-1222-100

