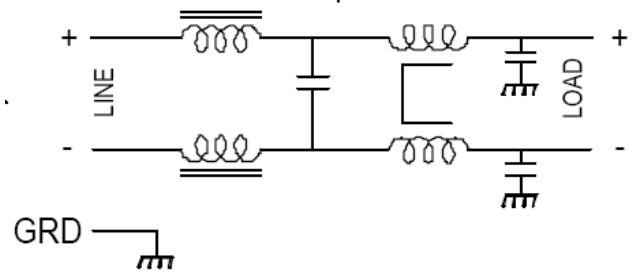


The Hh-1134-8 filter Has very good common mode and differential mode insertion loss. The filter is a circuit board mount and is designed to work in equipment with DC input power. The enclosure is a plated steel can to cut down on the radiation coupling across the filter.



Operating Voltage = 63 Vdc  
 Operating Current = 8 Amps  
 Temperature Range = -20 TO 50 Deg. C  
 Diel. Withstand (L-CASE) = 1500 V~ FOR 1 MIN.

Order P/N: HH-1134-8

