



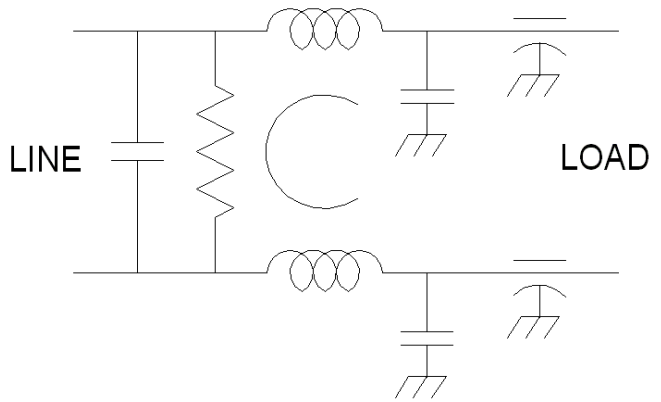
EF-1356-10B

The EF-1356-10B is an economical filter for use with systems designed to function in the tempest or other environment where the suppression of high frequency emissions is important.

This filter features "Feed-Through Capacitors" and has insertion loss to beyond 1.0Ghz.

The filter is also encapsulated with an epoxy material to make the filter capable of withstanding vibration and shock. The vibration and shock levels can be increased by supporting the rear of the enclosure in order to eliminate any cantilever action.

Order p/n: EF-1356-10B



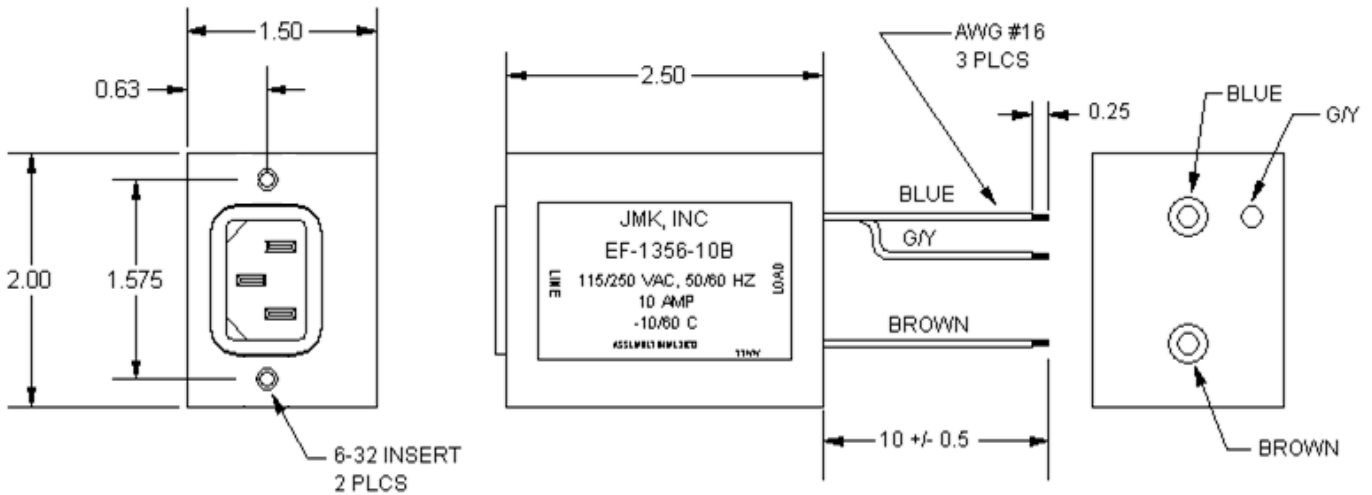
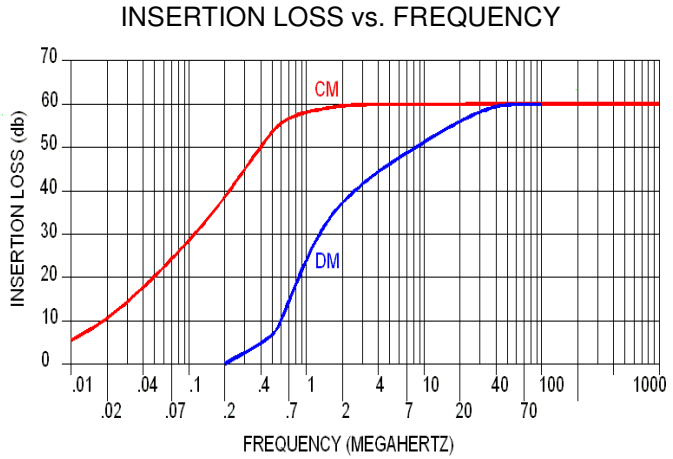
Operating Voltage = _____ 115-250 Vac
 Operating Current = _____ 10 Amps
 Operating Frequency = _____ 50-60 Hz
 Operating Temperature= _____ -10 - +60°C

Diel. Withstanding (line-case) = _____ 1500V~ for 1 Min
 Diel. Withstanding = (line-line)= _____ 1500Vdc for 1 Min

Leakage Current = _____ 2.5ma @ 250Vac, 60Hz

Max residual voltage after 1 sec = _____ 34V Max

Calculated MTBF = _____ 3,427,839 Hrs 30°C GB



USA JMK Inc 15 Caldwell Dr. Amherst, NH 03031 PH: 603 886-4100 FX: 603 886-4115
 email: info@jmkfilters.com
 EUR JMK Inc Glasgow G13 1DN Scotland UK PH: 44-(0) 7785310729 Fax: 44-(0) 141 589 1884