



# ZM-1888-300

The ZM-1888-300 filter is designed to operate in automotive environments where high current is present and small size and light weight is required.

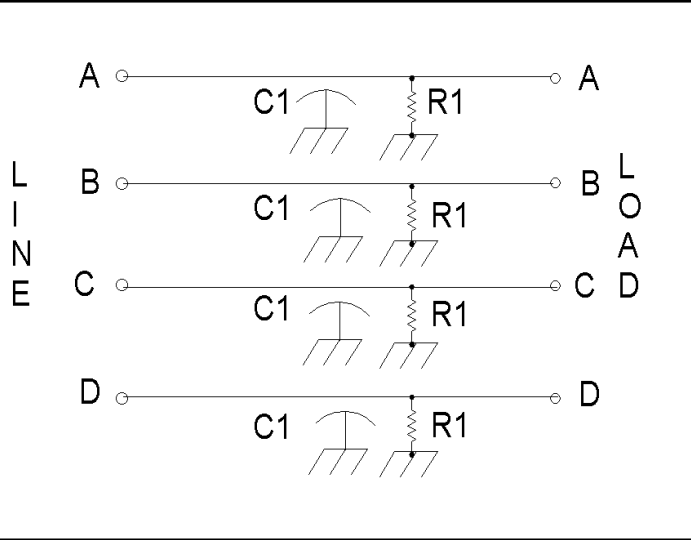
The filter provides high insertion loss from low frequencies to 1 Ghz.

This unit is ideally suited for conformance to the Mil-Std-461 conducted and radiated emissions.

The "Feed-Through Capacitors" provide protection against conducted and radiated susceptibility testing.

This filter is ROHS compliant.

Order P/N: ZM-1888-300



Operating Voltage = \_\_\_\_\_ 100 VDC  
 Operating Current (Max) = \_\_\_\_\_ 300 Amp  
 Temperature Range (Storage) = \_\_\_\_\_ -55 to 100 °C  
 Temperature Range (Operating) = \_\_\_\_\_ -40 to 70 °C  
 Diel. Withstanding Voltage (Term - Case) = \_\_\_\_\_ 200 VDC  
 Weight = \_\_\_\_\_ 2.2 Lbs  
 Calculated MTBF = \_\_\_\_\_ 1,344,129 Hrs @ 30 °C GB

