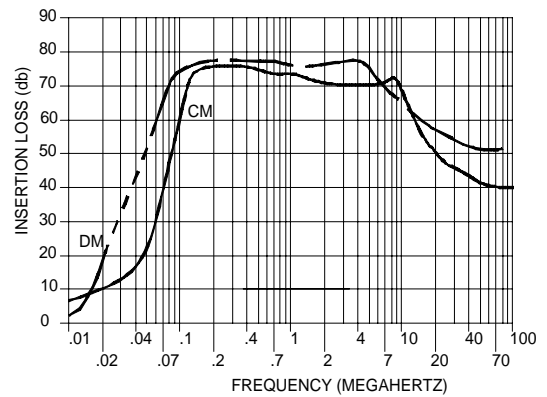
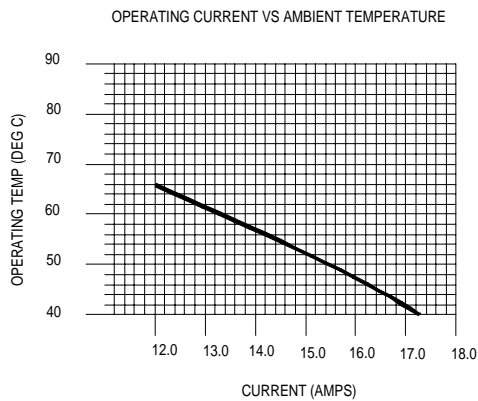
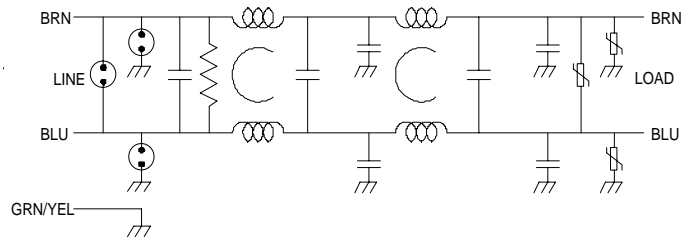




# FF-1503-18

Operating Voltage = \_\_\_\_\_ 125 Vac  
 Operating Current (Max) = \_\_\_\_\_ 18 AMP A/C  
 Frequency = \_\_\_\_\_ 60 HZ  
 Temp range (Storage) = \_\_\_\_\_ -40 to 125°C  
 Temp range (Oper.) @ 18.0 AMP = \_\_\_\_\_ -40 to 85°C \*  
 Note: (cooling air may be required)  
 Dielectric Withstand volt (Ph—Case) = 1500 Vac  
 Dielectric Withstand volt (Ph—Ph) = 1500 Vdc  
 Leakage current @ 125 V~, 60 HZ = 0.3 MA max.  
 Discharge Voltage after 1.0 sec = 43 V max.  
 Weight = \_\_\_\_\_ 1300 gr / 2.9 lb.

Order p/n: FF-1503-18



This filter is designed to operate with forced air cooling.

The curve above shows the operating temperature versus current in "still air".

With a 26 cfm fan supplying cooling the operating temperature is 85° C.

With a 34 cfm fan supplying cooling the operating temperature is 90° C.

