

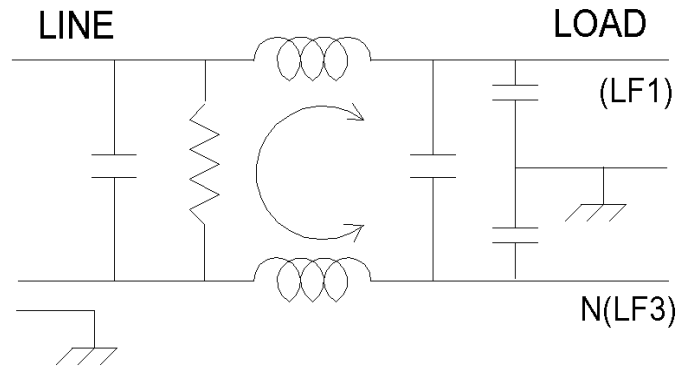


EA-0380-10A

The EF-0380-10A filter is a 10 amp single phase filter that can be used for both commercial and military applications where a LISN will be used to determine emission levels.

The inlet connector is a standard IEC receptacle.

Agency Approvals UL, CSA



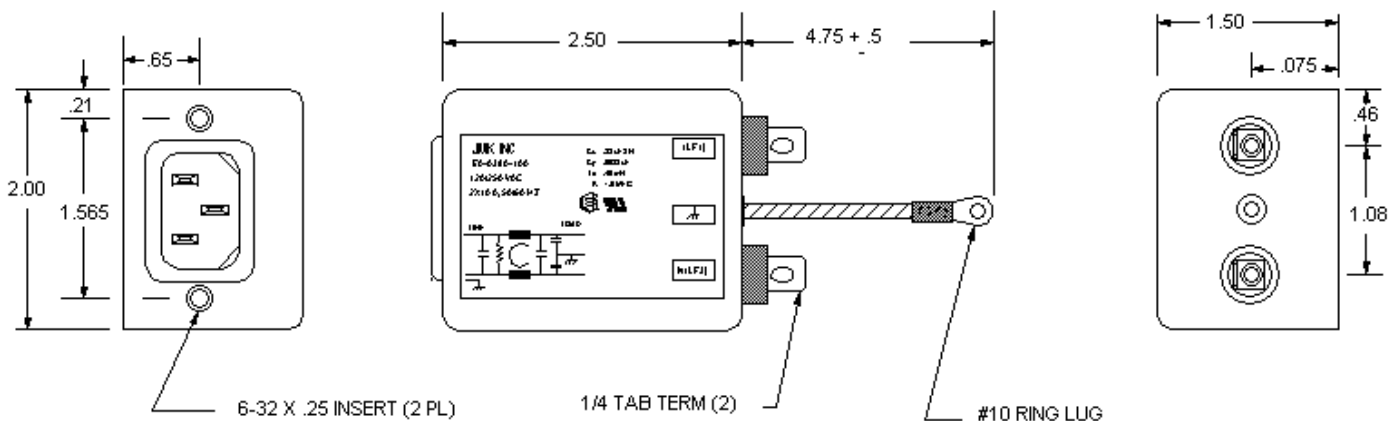
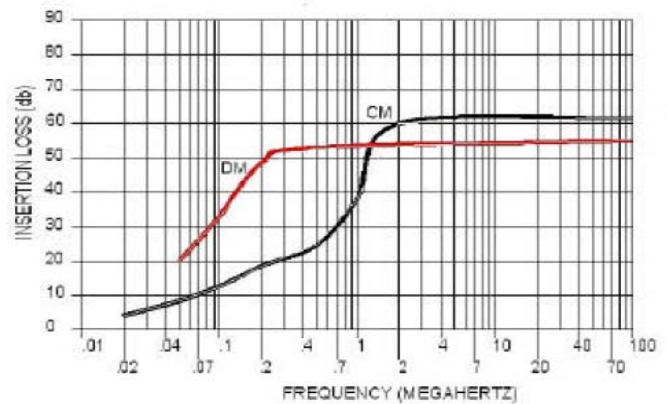
Operating Voltage = _____ 115/250 Vac
 Operating Current = _____ 10 Amp
 Operating Frequency = _____ 50/60 Hz
 Operating Temperature = _____ -20 to 40°C

Die. Withstanding (L-Ground) = _____ 1500 VDC for 1 Min
 Die. Withstanding (L - L) = _____ 1500 VDC for 1 Min

Leakage Current = _____ 0.50ma @ 250 VAC, 60Hz
 Residual Voltage (Max after 5 sec.) = _____ 32 Volts

Calculated MTBF = _____ 4,712,224 hrs GB @ 30°C

INSERTION LOSS vs. FREQUENCY



USA JMK Inc 15 Caldwell Dr. Amherst, NH 03031 PH: 603 886-4100 FX: 603 886-4115
 email: info@jmkfilters.com
 EUR JMK Inc Glasgow G13 1DN Scotland UK PH: 44-(0) 7785310729 Fax: 44-(0) 141 589 1884