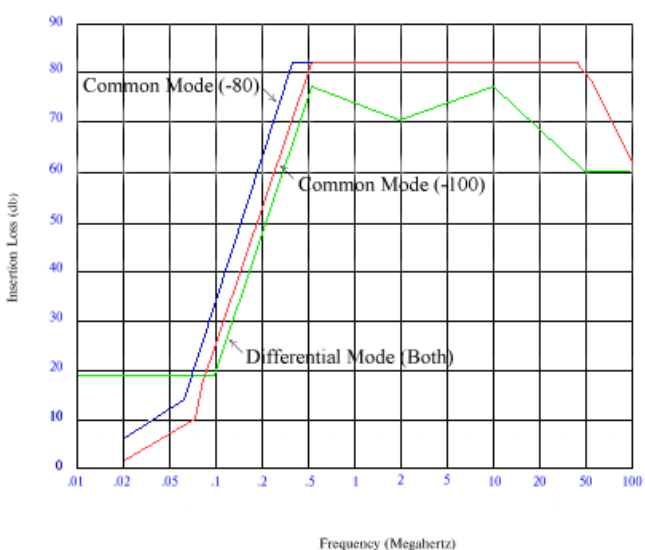
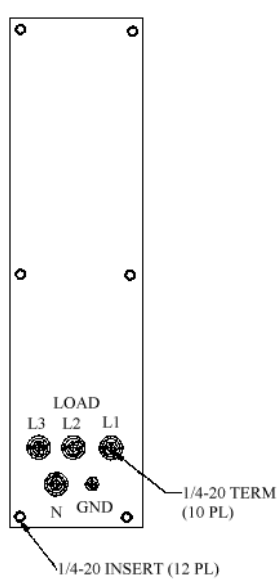
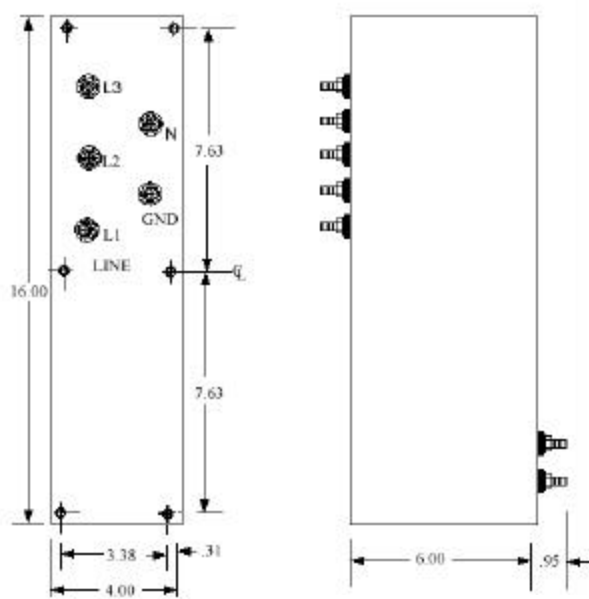
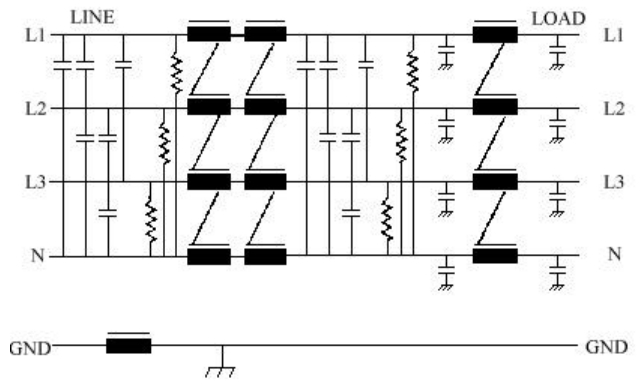




1041 SERIES

Operating Voltage = 250/480 Vac
 Operating Current Max= 80 & 100 amps
 Operating Frequency = 50 - 60Hz
 Operating Temperature = -40 to +50oC
 Dielectric Withstand (L to Case)= 1500V~for 1 Min.
 Dielectric Withstand (L to L)= 1500Vdc for 1 Min.
 Leakage current @ 250V~60Hz= 2.3 mA at 250Vac, 50Hz
 Max Residual Voltage after 5 secs =35 Volts Max



The 1041 series is designed to provide attenuation to switching regulator noise etc. At the power input to large computers and memory systems. These filters are also useful at the input to shelters, motor banks, facility power inputs or any installation requiring good common-mode and differential filtering. This series can be used on either Wye or Delta power systems.

JMK P/N Ordering Information
 80 Amps 1/4-20 Threaded Studs Terminals
 MM-1041-80
 100 Amps 1/4-20 Threaded Studs Terminals
 MM-1041-100