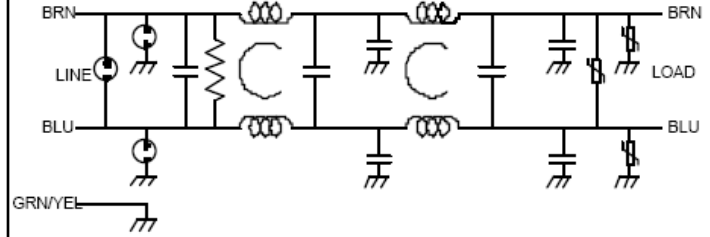
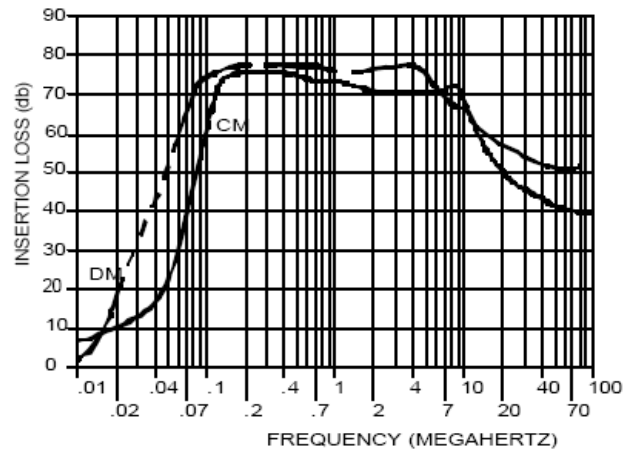
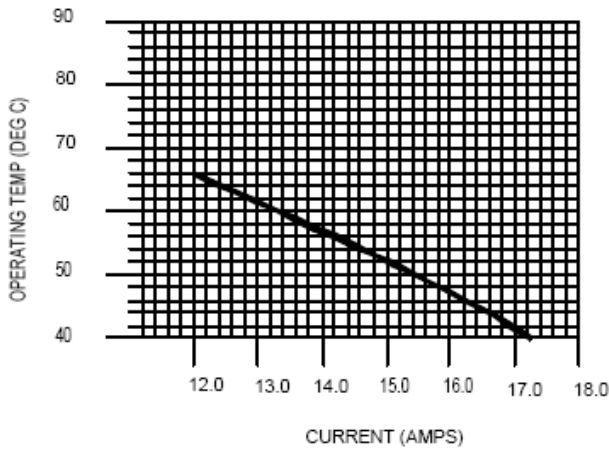


**Operating Voltage = 125 Vac**  
**Operating Current (Max) = 18 AMP A/C**  
**Frequency = 60 HZ**  
**Temp range (Storage) = -40 to 125°C**  
**Temp range (Operating) @ 18.0 AMP = -40 to 85°C \***  
**Note: (cooling air may be required)**  
**Dielectric Withstand voltage (Ph—Case) = 1500 Vac**  
**Dielectric Withstand voltage (Ph—Ph) = 1500 Vdc**  
**Leakage current @ 125 V~, 60 HZ = 0.3 MA max.**  
**Discharge Voltage after 1.0 sec = 43 V max.**  
**Weight = 1300 gram / 2.9 lb.**  
**Order p/n: FF-1503-18**  
**Calculated MTBF = 714,748 hours @ 30°C GB**



OPERATING CURRENT VS AMBIENT TEMPERATURE



This filter is designed to operate with forced air cooling. The curve above shows the operating temperature versus current in "still air". With a 26 cfm fan supplying cooling the operating temperature is 85°C. With a 34 cfm fan supplying cooling the operating temperature is 90°C.

